

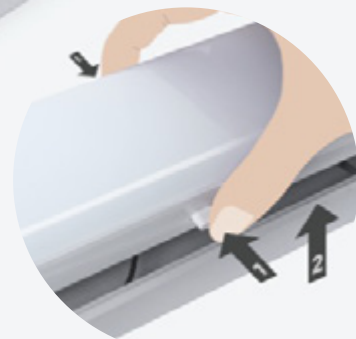
# Led Linear Strip Light

Address Virtually Any Indoor Lighting Need

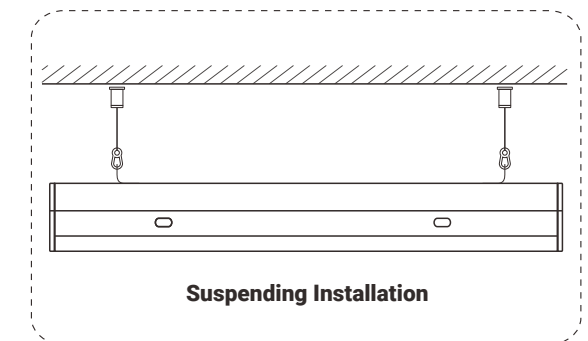
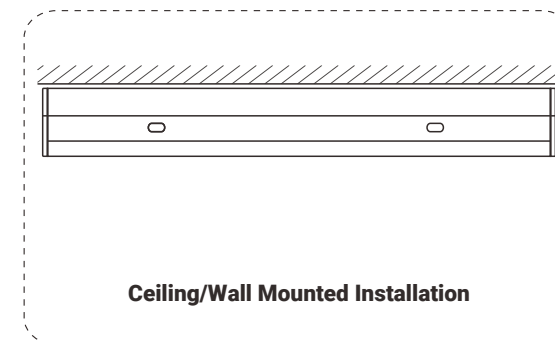


## Features

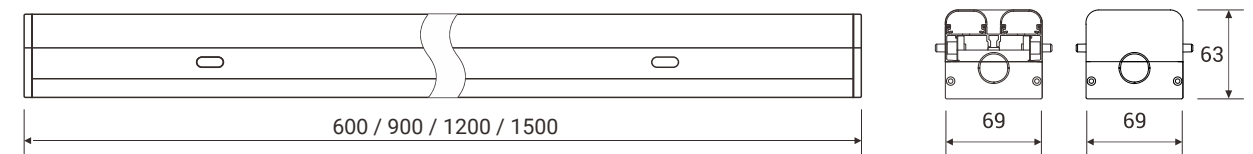
- ✓ Easy removable, detachable through spring button design
- ✓ Knock-out end cap for continuous mounting
- ✓ Heat protection system with excellent internal driver



## ••• Installation



## ••• Product Line Drawing (Size:mm)



## ••• Product Specification

<b>Material :</b> AL+PC	<b>Input Voltage :</b> AC100-277V	<b>CCT :</b> <span style="color: yellow;">■</span> 3000K <span style="color: lightblue;">■</span> 4000K <span style="color: lightgrey;">■</span> 5000K <span style="color: blue;">■</span> 6000K
-------------------------	-----------------------------------	--

Model	Size	Power	PC Cover	Beam Angle	Package
LED-LSL2-25W	2ft	25W	Frosted	3500	650*230*365 (mm) 6pcs/ctn
LED-LSL2-30W	2ft	30W	Frosted	4200	650*230*365 (mm) 6pcs/ctn
LED-LSL3-36W	3ft	36W	Frosted	5040	900*230*365 (mm) 6pcs/ctn
LED-LSL4-48W	4ft	48W	Frosted	6720	1200*230*365 (mm) 6pcs/ctn
LED-LSL4-60W	4ft	60W	Frosted	8400	1200*230*365 (mm) 6pcs/ctn
LED-LSL5-60W	5ft	60W	Frosted	8400	1500*230*245 (mm) 4pcs/ctn
LED-LSL5-75W	5ft	75W	Frosted	10500	1500*230*245 (mm) 4pcs/ctn!

••• **Applications:** Warehouses, Work Areas, Shopping malls, Supermarkets, Office, etc

■ Spring button



■ Power entry from the back



■ Drop-proof with safety rope



■ Suspending Optional

