

Led Shoebox

Suitable for all outdoor applications, such as parking lot lighting, street lighting, stadium lighting, and more.

LED SHOEBOX

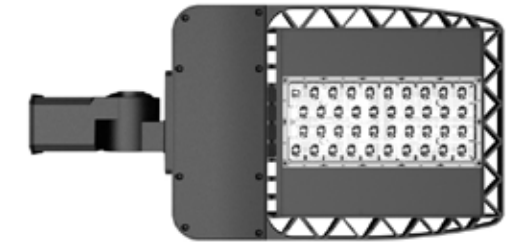


1. Beam Angle: Type II, Type II, Type V
2. Meanwell driver
3. Motion sensor compatible
4. Life Span: 100,000 hours
5. Input Voltage: AC100-277V, AC200-480V

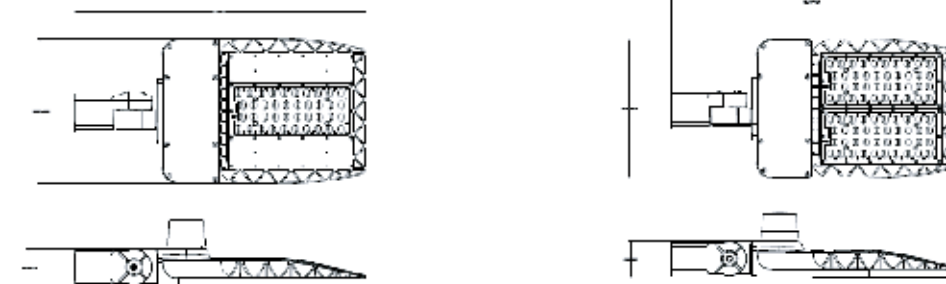


Application

- Warehouses, factories & manufacturing sites
- Road, sidewalk, parking lots, gardens
- Tennis court



Product Line Drawing



Product Features

- IP65 Waterproof
- Philips Lumileds 3030 chips
- Die-casting aluminum housing
- Motion sensor, photocell control and 10KV surge protection available
- Three different mounting options



Specification

	CRI: >70	CCT: 4000K-5000K		Material: AL	
Model	Power	Weight	Pc Cover	Lumens Efficacy	Package
LED- SL-60W	60W	5.4kg	Frosted	140lm/w	616x305x80 [mm]
LED- SL-100W	100W	5.4kg	Frosted	140lm/w	616x305x80 [mm]
LED- SL-150W	150W	6.6kg	Frosted	140lm/w	616x305x80 [mm]
LED- SL-200W	200W	6.6kg	Frosted	140lm/w	616x305x80 [mm]